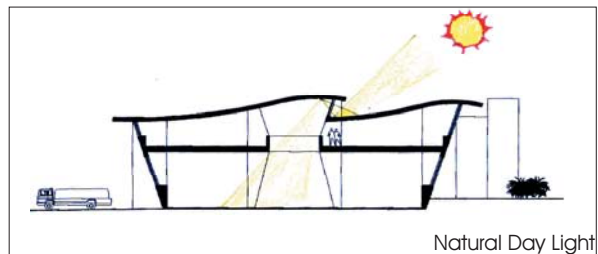


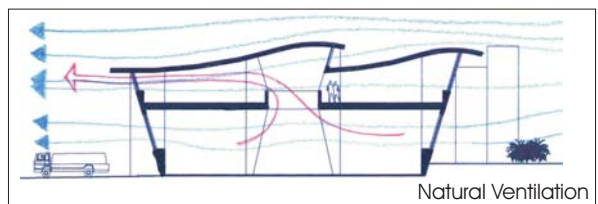
STAINLESS STEEL WORKS PLANT  
BEIT SHEMESH, ISRAEL



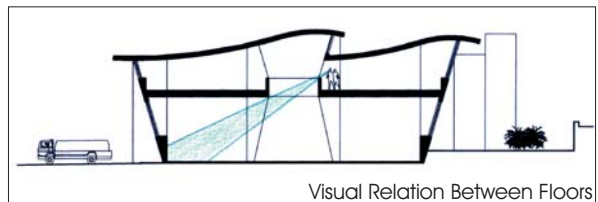
Perspective from Northwest



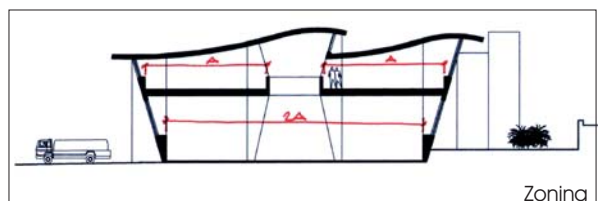
Natural Day Light



Natural Ventilation



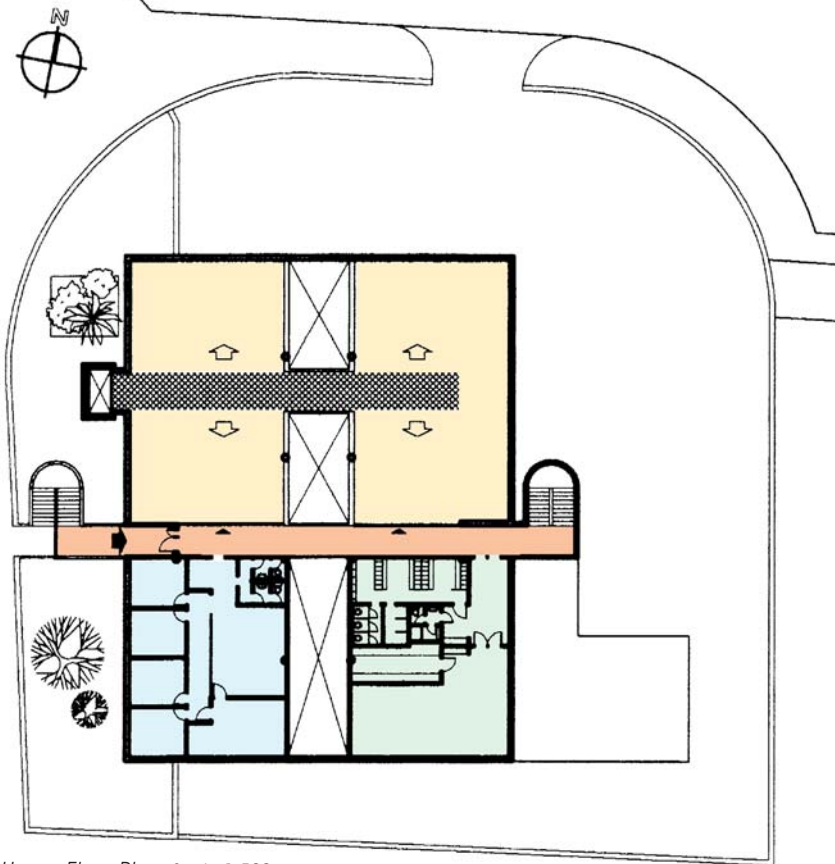
Visual Relation Between Floors



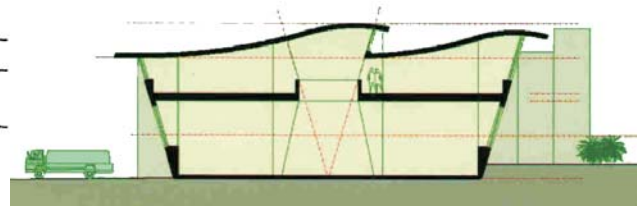
Zoning

Architects:  
Oster Friedmann Lang, Architects  
Project Architect: Otto Friedmann

STAINLESS STEEL WORKS PLANT  
BEIT SHEMESH, ISRAEL



Upper Floor Plan Scale 1:500



Cross Section Scale 1:500

The plant's program called for maximum production area in a tight plot of land, located in a high-density industrial park. Production halls are divided into two floors that are connected by a goods elevator.

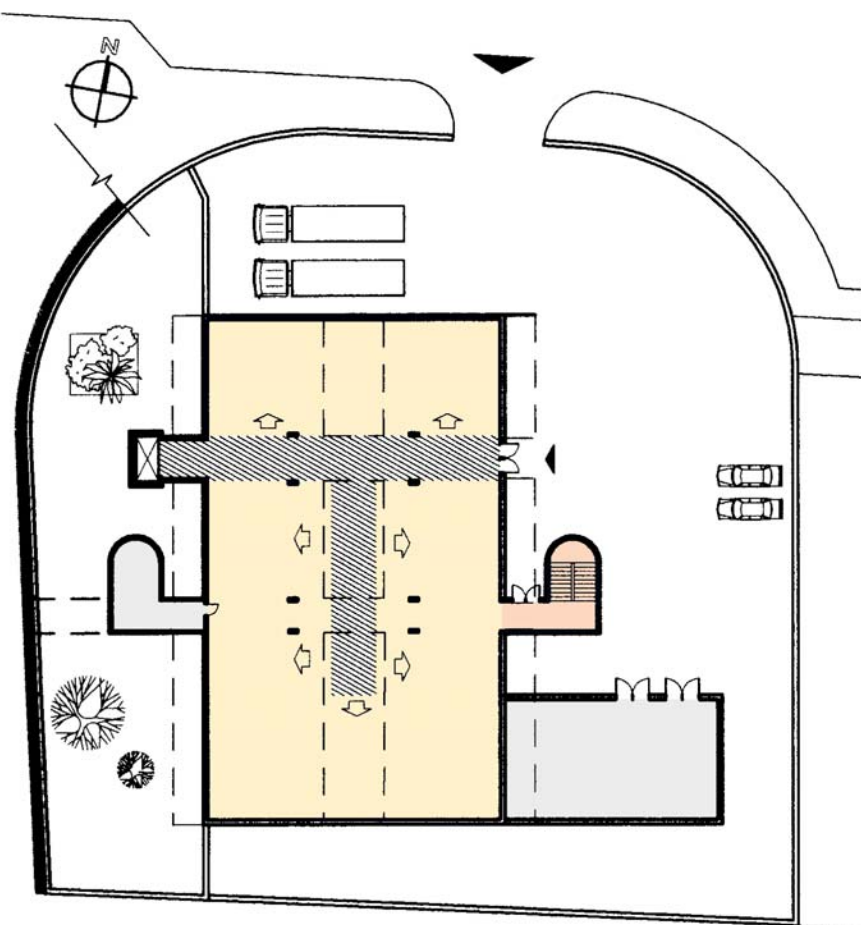
The form of the roof with its skylights bring both indirect sunlight and cool westerly breezes into the upper floor, and on to the lower floor via the double-height void running the length of the building.

Zoning allows for two floors of equal area. Since the upper floor is split into two halves longitudinally by the double-height void, and in order not to sacrifice the allowed-for floor area, the edge of the upper floor is moved beyond the perimeter of the lower floor by 2 mts. The outer wall is inclined outward, connecting the perimeter of both floors. (See cross section)

Stairs, lift, etc. are placed at the periphery, in order to allow for large, continuous production halls on both floors.

Total built area: approx. 1,600m<sup>2</sup>.

Architects:  
Oster Friedmann Lang, Architects  
Project Architect: Otto Friedmann

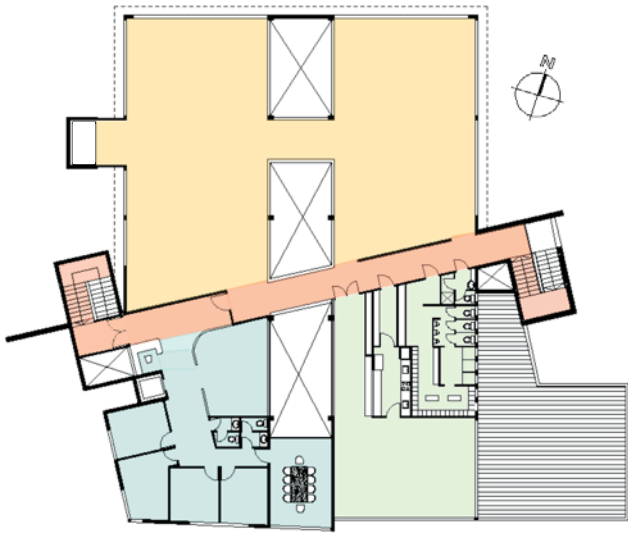


Ground Floor Plan Scale 1:500

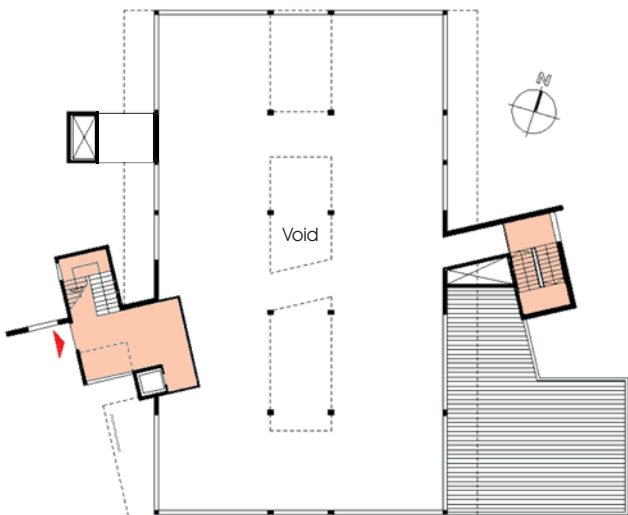
LEGEND

- Production
- Storage / Technical
- Staff Circulation
- Administration
- Staff: Changing rooms & cafeteria

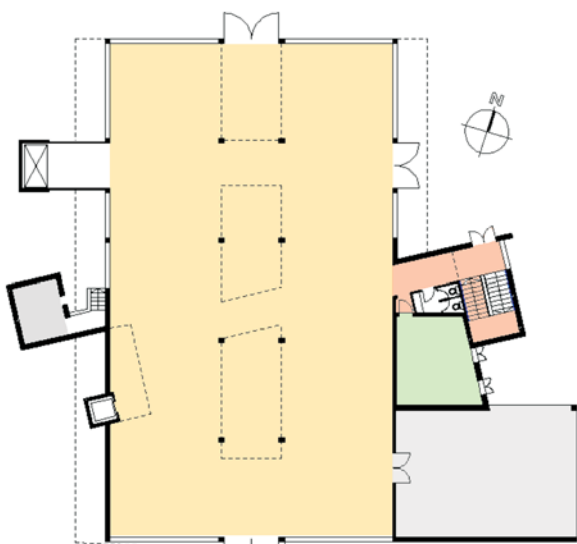
# STAINLESS STEEL WORKS PLANT BEIT SHEMESH, ISRAEL



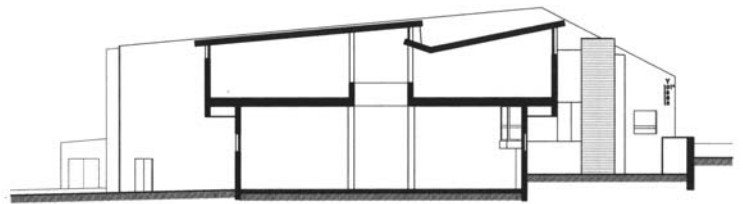
Upper Floor Plan Scale 1:500



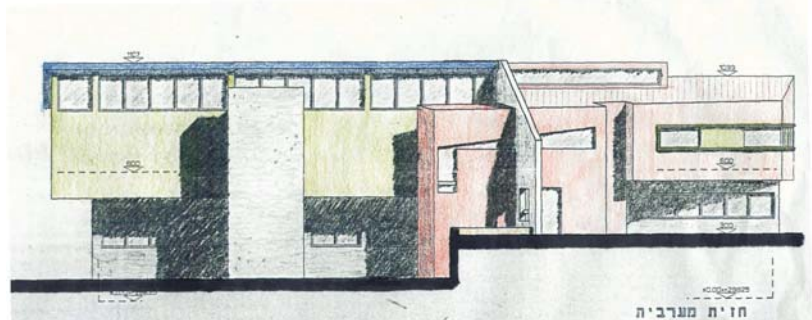
Middle Floor Plan Scale 1:500



Ground Floor Plan Scale 1:500



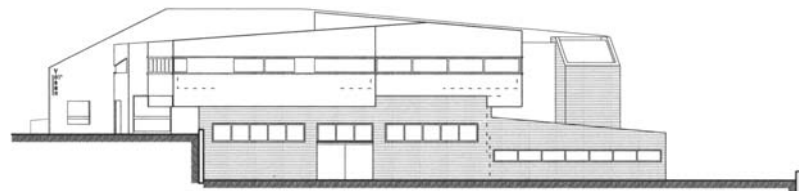
Cross Section Scale 1:500



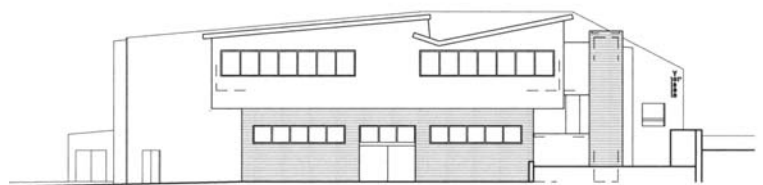
West Elevation Scale 1:500



East Elevation Scale 1:500



South Elevation Scale 1:500



North Elevation Scale 1:500

## LEGEND

- Production
- Storage / Technical
- Staff Circulation
- Administration
- Staff: Changing rooms & cafeteria

An alternative low-budget solution without curved roofs and inclined walls.

Architects:  
Oster Friedmann Lang,  
Architects  
Project Architect:  
Otto Friedmann

